



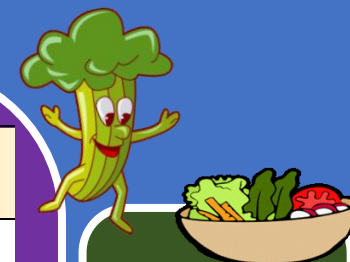
Bothal Primary School

Spring - Summer 2026

Lunch Menu

Week 1

| Meal Options | Meat Free Monday | Tuesday | Wednesday | Thursday | Fishy Friday |
|---------------------|--|--------------------------------------|--|--|----------------------------|
| Main | Tomato and Basil Pasta with Crusty Bread | BBQ Chicken Melt with Roast Potatoes | Beef Bolognese with Spaghetti and Garlic Bread | Pork Sausage Casserole with Yorkshire Pudding and Creamed Potato | Fish Portion with Chips |
| Light Bite | Quorn Chilli Beef Taco with Rice | Cheese and Onion Pie | Pizza Bagel | Quorn Fajitas with Savoury Rice | Quorn Dippers with Chips |
| Deli Bar | Cheese Pitta | Egg Mayo | Tuna Baguette | Ham and Cheese Toasties | Meatball Marinara Baguette |
| Spud Station | Enjoy a freshly baked jacket potato and salad with a choice of fillings: Cheddar Cheese, Tuna Mayo or Baked Beans | | | | |
| Dessert | Apple & Ginger Sponge with Custard | Ginger Biscuits | Belgian Waffles Fruit and Ice Cream | Chocolate Surprise Cake | Fruity Flapjack |



A selection of seasonal vegetables, fresh salads and bread will be on offer daily to accompany the menu.



Fresh fruit & low-fat yoghurt are available every day as an alternative to the sweet of the day.



Please notify the kitchen of any cultural or dietary requirements.

Please note on occasion we may need to substitute or change menu options due to the availability of products and ingredients. Allergen information available on request.